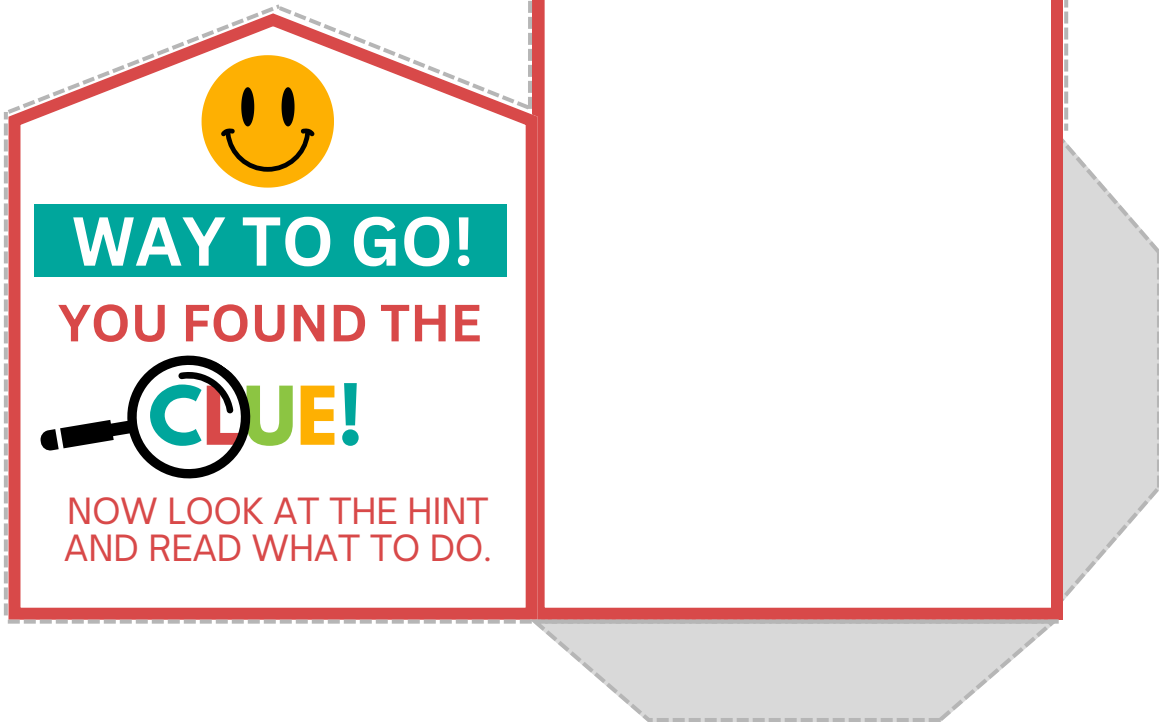


Cut along the dotted line and fold envelope in half and along the tab. Glue the tab to the front of the envelope.



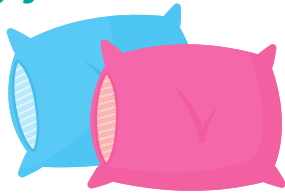
Cut along the dotted line and fold envelope in half and along the tab. Glue the tab to the front of the envelope.



CLUE #1

I am soft and cuddly,
with fur that's brown.

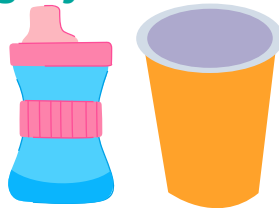
Find me where you
lay your head down.



CLUE #2

I hold your milk and
juice so sweet

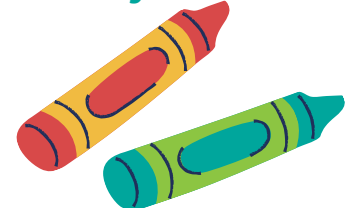
find me where you
get your treats.



CLUE #3

I am bright and make
things shine

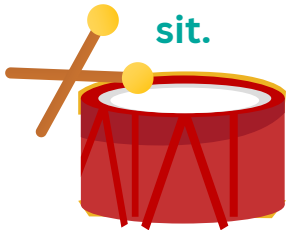
find me where you
draw your lines.



CLUE #4

I make music when
you give me a hit

find me where you
sit.



CLUE #5

I'm full of stories, old
and new

find me where you
look at pictures too.



YAY!!

You've found the final
clue at last, But know
this hunt is in the past,
The treasure here, my
dear, is you, And all the
love I share with you.



CLUE #1

CLUE #2

CLUE #3

CLUE #4

CLUE #5

YAY!!